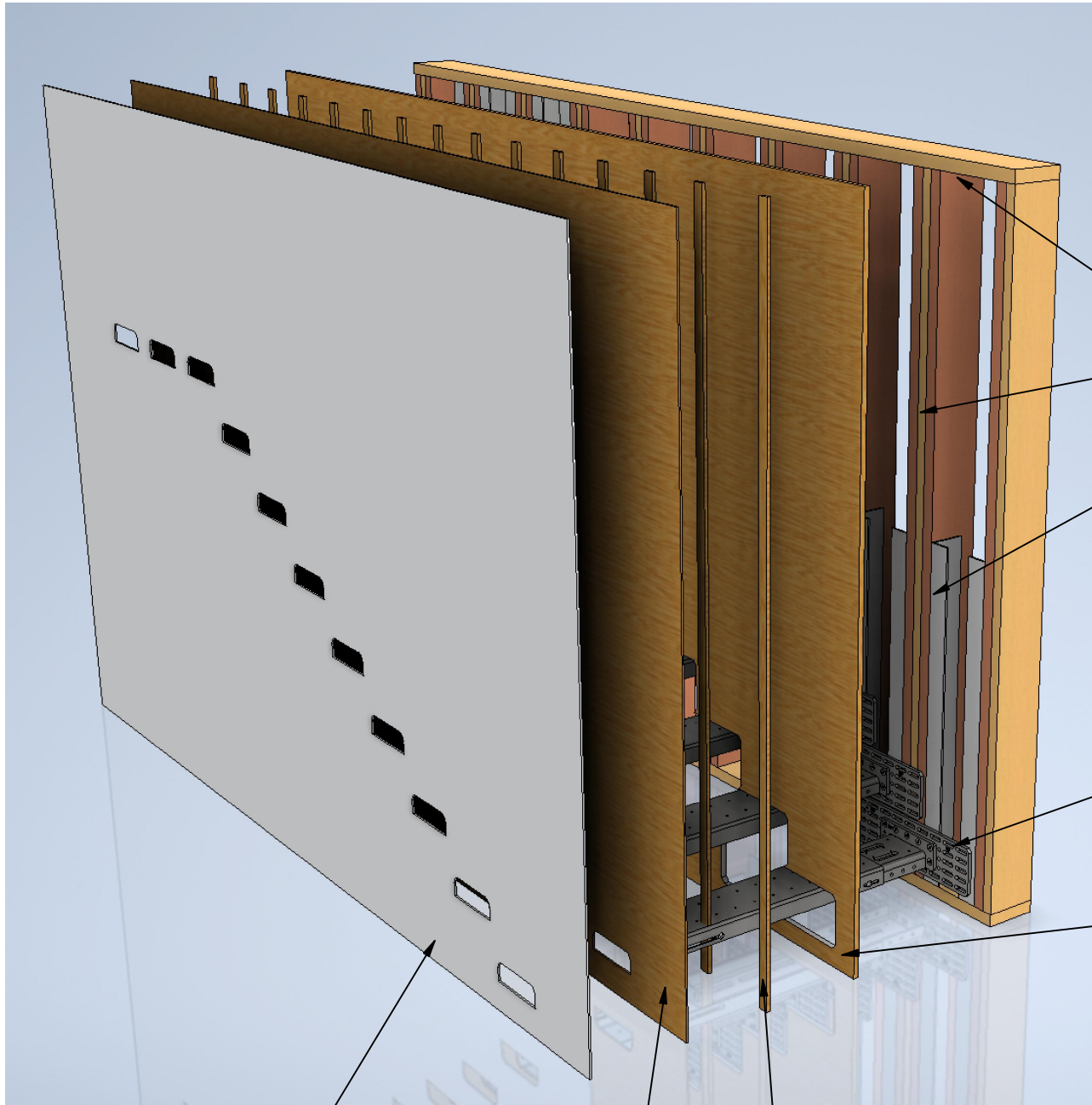


CANTILEVER WALL BUILD OUT
FOR DRYWALL APPLICATION



"L" BRACKETS LOCATED
TOP AND BOTTOM OF
LVL STUD ASSEMBLY

2 X 6 OR GREATER STUD
SANDWICHED BY LVL,
GLUED AND SCREWED
TOGETHER (SEE NOTES)

2" X 3" X 1/4" THICK
ALUMINUM ANGLE
GLUED AND SCREW
TO LVL ASSEMBLY

CANTILEVER STEEL
MOUNTING PLATE


3/4" ADVANTECH
SUBFLOOR
GLUED AND SCREWED
TO STUD WALL
ASSEMBLY
SCREWS ON MIN.
6" CENTERS

1/4" DRYWALL
GLUED TO 1/4" PLYWOOD

1/4" PLYWOOD
GLUED TO FURRING STRIPS

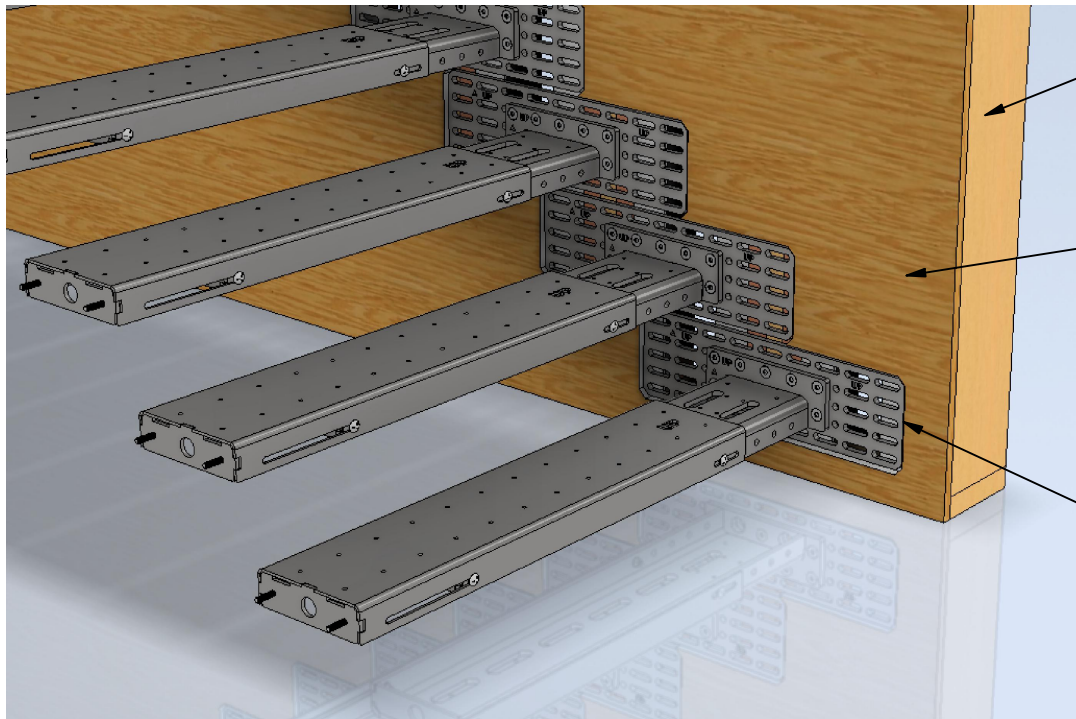
1/2" THICK FURRING
STRIPS TO BE ARRANGED
AS NEEDED, GLUED
TO ADVANTECH

- NOTES:
- PLEASE LEAVE AN AIR GAP BETWEEN THE CANTILEVER STEEL AND ANY SUBSTRATE. STEEL IN CONTACT WITH ANOTHER SUBSTRATE WILL SQUEAK.
 - STAGGER ALL SEAMS IN PLYWOOD AND BACKER MATERIAL.
 - VIEWRAIL RECOMMENDATION: GLUE TO BE LOCTITE PL MAX PREMIUM (NOT PL 3, NOT PL)
 - VIEWRAIL RECOMMENDATION: 2 X 6 WALL ARE RECOMMENDED IF UTILIZING A 2 X 4 WALL YOU MUST SHEATH THE OPPOSITE SIDE OF THE WALL WITH 3/4" SHEATHING

	Part Number:	Tolerance: .X" +/- .03" .XX" +/- .015" .XXX" +/- .005" X/X" +/- 1/16" X° +/- 0.5° Or as Specified
	Part Description:	
Revision: 5	Material: Finish:	
Sheet 1 of 6		

			5		9-2-25	
DIM	TOLERANCE	DEVICE	REV	DESCRIPTION	DATE	APPROVED BY
CRITICAL INSPECTIONS			REVISION HISTORY			

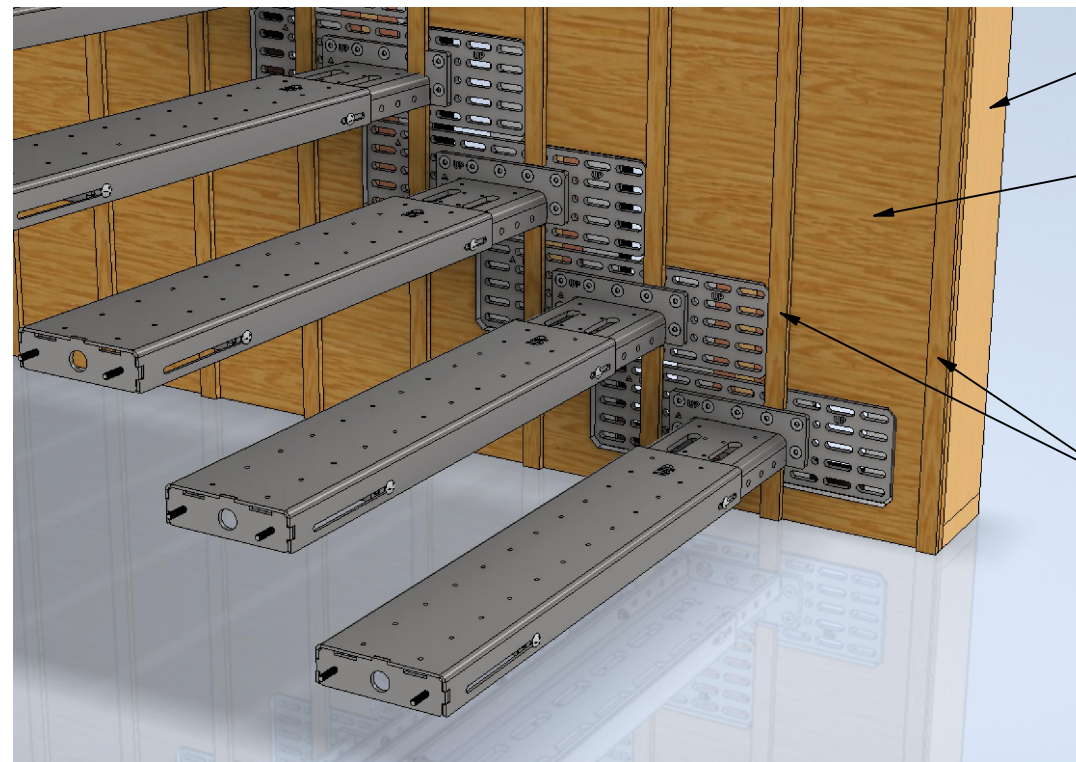
CANTILEVER WALL BUILD OUT FOR DRYWALL APPLICATION



STUD WALL

3/4" ADVANTECH
SUBFLOOR
GLUED AND SCREWED
TO STUD WALL
ASSEMBLY
SCREWS ON MIN.
6" CENTERS

LEAVE 1/4" GAP BETWEEN PLYWOOD AND STEEL




STUD WALL

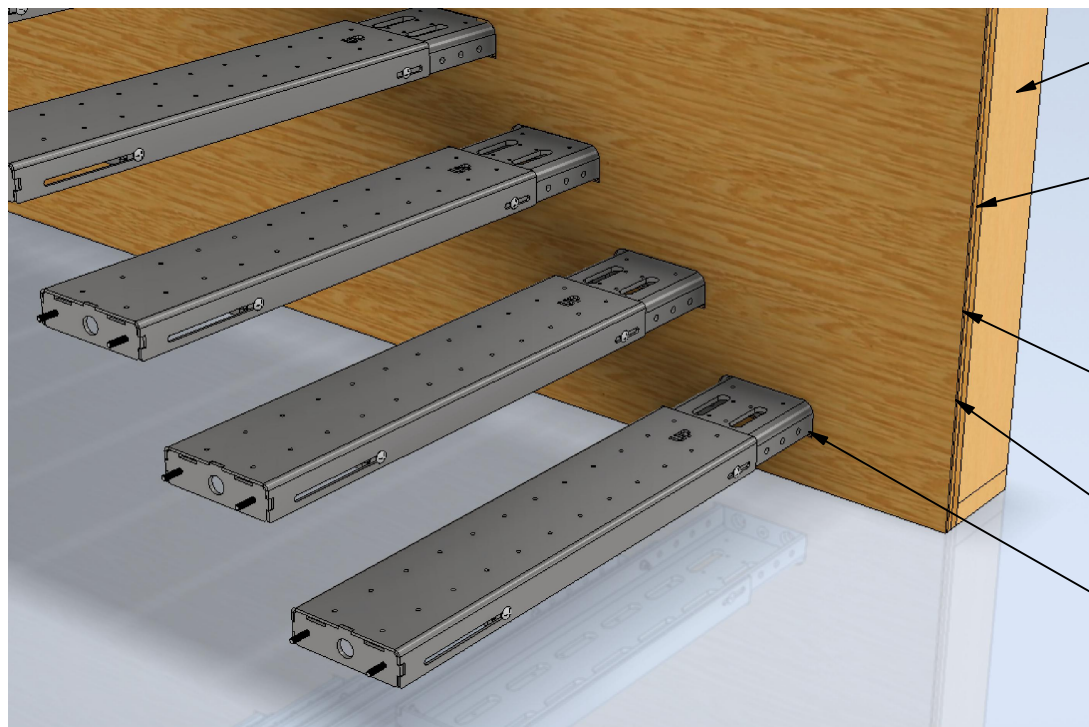
3/4" ADVANTECH
SUBFLOOR
GLUED AND SCREWED
TO STUD WALL
ASSEMBLY
SCREWS ON MIN.
6" CENTERS

1/2" FURRING STRIPS LOCATED
AND SPACED PER JOB REQUIREMENTS
GLUED TO ADVANTECH

NOTES:

- PLEASE LEAVE AN AIR GAP BETWEEN THE CANTILEVER STEEL AND ANY SUBSTRATE. STEEL IN CONTACT WITH ANOTHER SUBSTRATE WILL SQUEAK.
- STAGGER ALL SEAMS IN PLYWOOD AND BACKER MATERIAL.
- VIEWRAIL RECOMMENDATION: GLUE TO BE LOCTITE PL MAX PREMIUM (NOT PL 3, NOT PL)
- VIEWRAIL RECOMMENDATION: 2 X 6 WALL ARE RECOMMENDED IF UTILIZING A 2 X 4 WALL YOU MUST SHEATH THE OPPOSITE SIDE OF THE WALL WITH 3/4" SHEATHING

	Part Number:	Tolerance: .X" +/- .03" .XX" +/- .015" .XXX" +/- .005" X/X" +/- 1/16" X° +/- 0.5° Or as Specified
	Part Description:	
Revision: 5	Material:	
Sheet 2 of 6	Finish:	



STUD WALL

3/4" ADVANTECH
SUBFLOOR
GLUED AND SCREWED
TO STUD WALL
ASSEMBLY
SCREWS ON MIN.
6" CENTERS

1/2" FURRING STRIPS LOCATED
AND SPACED PER JOB REQUIREMENTS
GLUED TO ADVANTECH

1/4" PLYWOOD GLUED TO FURRING STRIPS

CUT PLYWOOD AROUND STEEL - LEAVE 1/4" GAP BETWEEN
PLYWOOD AND STEEL

CANTILEVER WALL BUILD OUT FOR DRYWALL APPLICATION

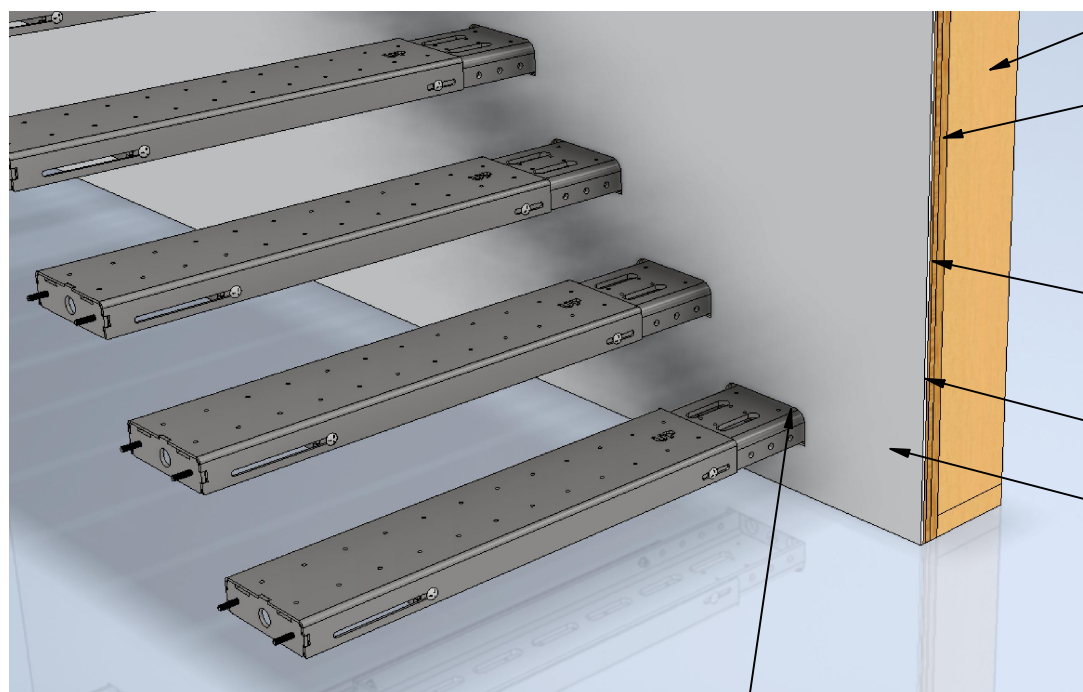
NOTES:

- PLEASE LEAVE AN AIR GAP
BETWEEN THE CANTILEVER
STEEL AND ANY SUBSTRATE.
STEEL IN CONTACT WITH
ANOTHER SUBSTRATE WILL
SQUEAK.

- STAGGER ALL SEAMS IN
PLYWOOD AND
BACKER MATERIAL.

- VIEWRAIL RECOMMENDATION:
GLUE TO BE LOCTITE PL MAX
PREMIUM (NOT PL 3, NOT PL)

- VIEWRAIL RECOMMENDATION:
2 X 6 WALL ARE RECOMMENDED
IF UTILIZING A 2 X 4 WALL
YOU MUST SHEATH THE
OPPOSITE SIDE OF THE WALL
WITH 3/4" SHEATHING



STUD WALL

3/4" ADVANTECH
SUBFLOOR
GLUED AND SCREWED
TO STUD WALL
ASSEMBLY
SCREWS ON MIN.
6" CENTERS

1/2" FURRING STRIPS LOCATED
AND SPACED PER JOB REQUIREMENTS
GLUED TO ADVANTECH

1/4" PLYWOOD GLUED TO
FURRING STRIPS

1/4" DRYWALL GLUED TO
1/4" PLYWOOD

CUT DRYWALL AROUND STEEL -
LEAVE 1/4" GAP BETWEEN DRYWALL AND STEEL



Part Number:

Part Description:

Revision: 5

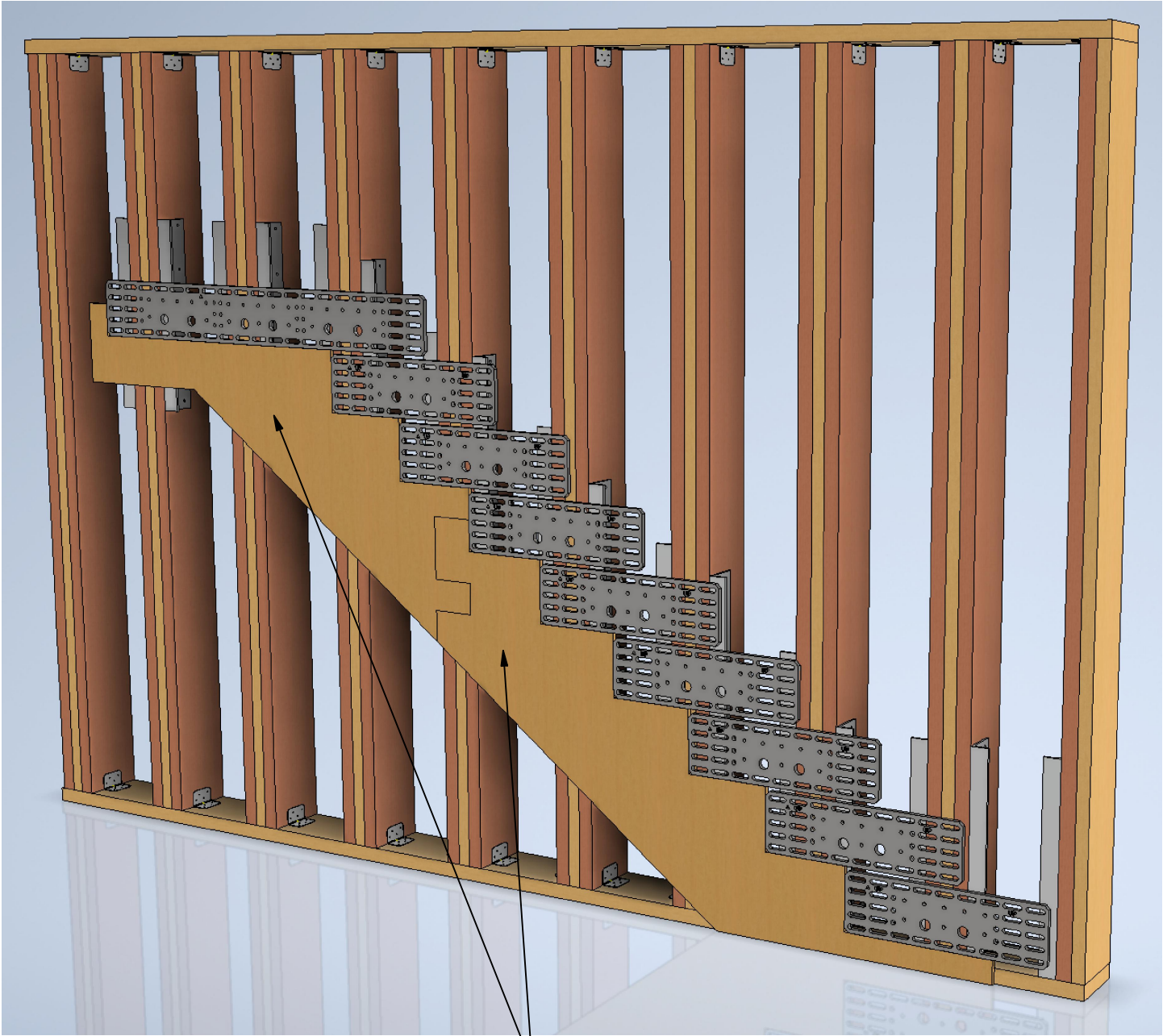
Material:
Finish:

Sheet 3 of 6

Tolerance:

.X" +/- .03"
.XX" +/- .015"
.XXX" +/- .005"
X/X" +/- 1/16"
X° +/- 0.5°
Or as Specified


CANTILEVER WALL BUILD OUT
FOR DRYWALL APPLICATION



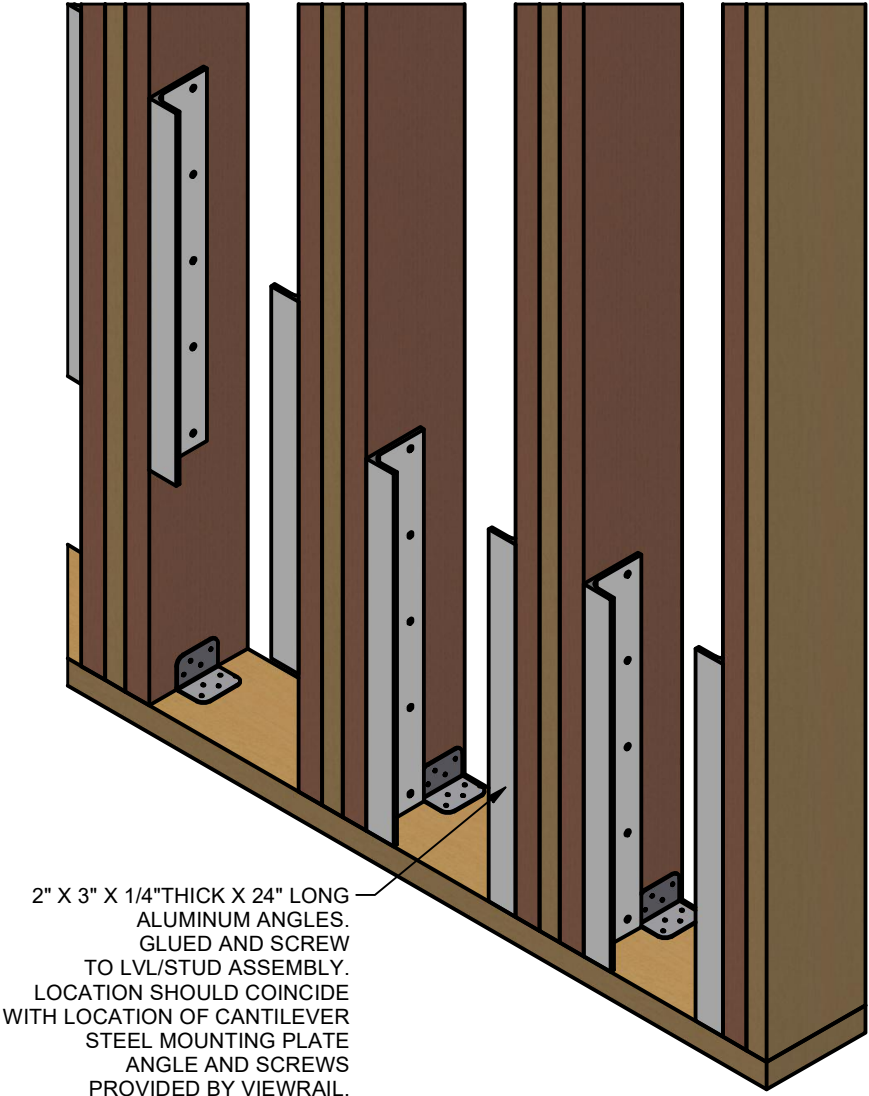
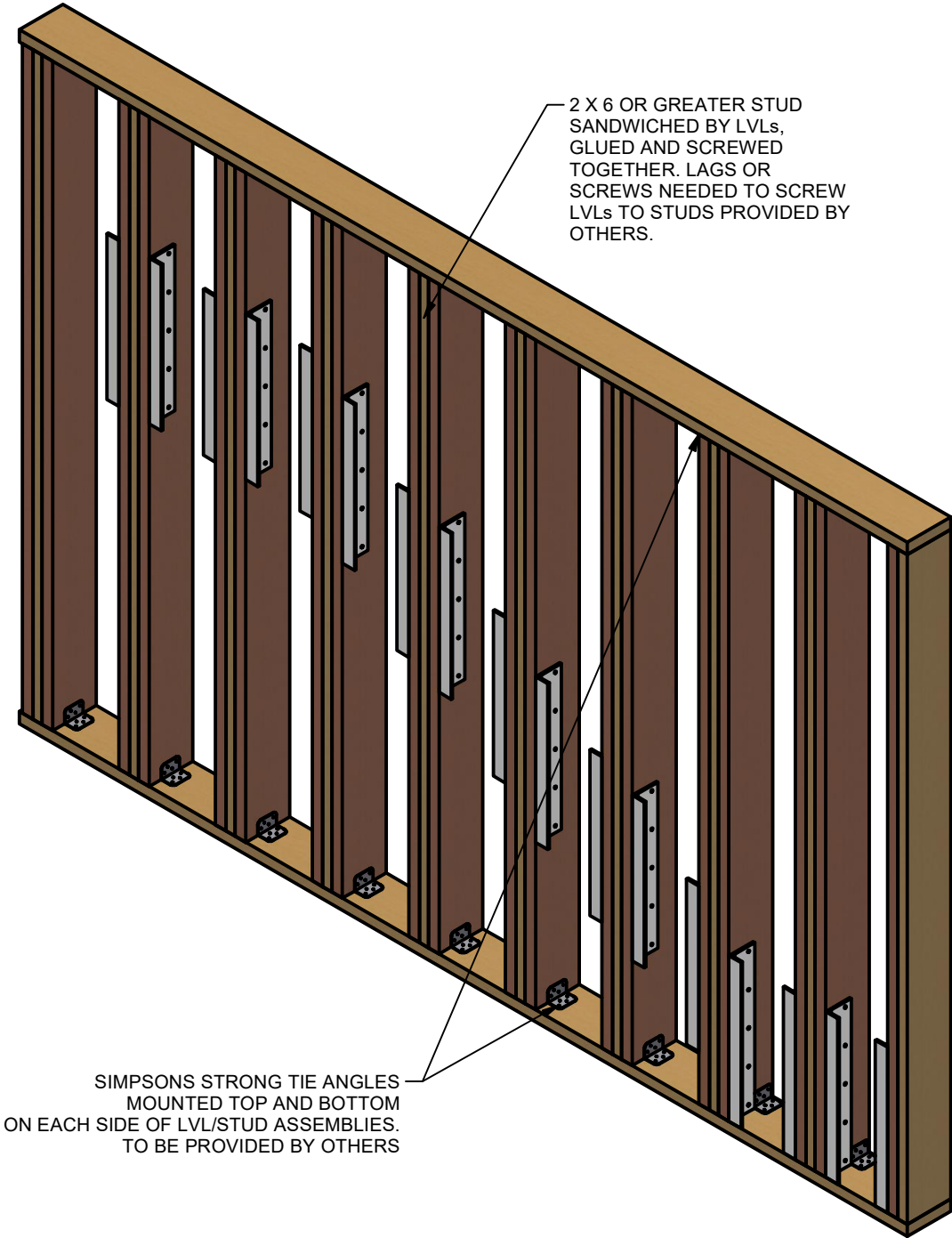
PLYWOOD TEMPLATES
USED TO LOCATE CANTILEVER
STEEL MOUNTING PLATES.
TEMPLATE TO BE REMOVED
AFTER MOUNTING PLATES AND
ANGLE SUPPORTS ARE LOCATED
AND MOUNTED. TEMPLATES TO
BE PROVIDED BY VIEWRAIL.


NOTES:

- PLEASE LEAVE AN AIR GAP
BETWEEN THE CANTILEVER
STEEL AND ANY SUBSTRATE.
STEEL IN CONTACT WITH
ANOTHER SUBSTRATE WILL
SQUEAK.
- STAGGER ALL SEAMS IN
PLYWOOD AND
BACKER MATERIAL.
- VIEWRAIL RECOMMENDATION:
GLUE TO BE LOCTITE PL MAX
PREMIUM (NOT PL 3, NOT PL)
- VIEWRAIL RECOMMENDATION:
2 X 6 WALL ARE RECOMMENDED
IF UTILIZING A 2 X 4 WALL
YOU MUST SHEATH THE
OPPOSITE SIDE OF THE WALL
WITH 3/4" SHEATHING

	Part Number:	Tolerance: .X" +/- .03" .XX" +/- .015" .XXX" +/- .005" X/X" +/- 1/16" X° +/- 0.5° Or as Specified
	Part Description:	
Revision: 5	Material: Finish:	
Sheet 4 of 6		

CANTILEVER WALL BUILD OUT
FOR DRYWALL APPLICATION



	Part Number: CAFP	Tolerance:
	Part Description: Cantilever Stud Wall Assembly	.X" +/- .03"
		.XX" +/- .015"
		.XXX" +/- .005"
Revision: 5	Material:	X/X" +/- 1/16"
Sheet 5 of 6	Finish:	X° +/- 0.5°
		Or as Specified

CANTILEVER WALL BUILD OUT
FOR DRYWALL APPLICATION


ITEMS SUPPLIED BY VIEWRAIL:

- CANTILEVER STEEL TREAD BRACKETS
- TREADS
- ALL BOLTS FOR CANTILEVER STEEL ASSEMBLY
- ALUMINUM ANGLE
- SCREWS TO ATTACH ALUMINUM ANGLE
- TEMPLATES FOR MOUNTING STEEL BRACKETS
- PLYWOOD TEMPLATES AND HARDWARE FOR GLASS RAILING

ITEMS NOT SUPPLIED BY VIEWRAIL:

- LOCTITE PL MAX GLUE
- LVLs
- ADVANTECH SUB-FLOOR MATERIAL
- BACKER BOARD
- PLYWOOD FOR BUILD OUT
- FURRING STRIPS
- "L" BRACKETS
- SCREWS
- PLYWOOD FOR TEMP TREADS AND RISERS
- STONE
- DRYWALL

- NOTES:
- PLEASE LEAVE AN AIR GAP BETWEEN THE CANTILEVER STEEL AND ANY SUBSTRATE. STEEL IN CONTACT WITH ANOTHER SUBSTRATE WILL SQUEAK.
 - STAGGER ALL SEAMS IN PLYWOOD AND BACKER MATERIAL.
 - VIEWRAIL RECOMMENDATION: GLUE TO BE LOCTITE PL MAX PREMIUM (NOT PL 3, NOT PL)
 - VIEWRAIL RECOMMENDATION: 2 X 6 WALL ARE RECOMMENDED IF UTILIZING A 2 X 4 WALL YOU MUST SHEATH THE OPPOSITE SIDE OF THE WALL WITH 3/4" SHEATHING

	Part Number:	Tolerance: .X" +/- .03" .XX" +/- .015" .XXX" +/- .005" X/X" +/- 1/16" X° +/- 0.5° Or as Specified
	Part Description:	
Revision: 5	Material:	
Sheet 6 of 6	Finish:	